

检测报告 Test Report



报告编号 A2190281167101001E
Report No. A2190281167101001E

第 1 页 共 7 页
Page 1 of 7

申请单位 东莞市益邦包装材料有限公司
Applicant DONGGUAN YIKBOND PACKAGING CO., LTD
地 址 东莞市东坑镇角社东兴西路63号
Address NO.63 W.DONGXING RD., DONGKENG TOWN, DONGGUAN

以下测试之样品及样品信息由申请者提供并确认

The following sample(s) and sample information was/were submitted and identified by/on the behalf of the client

样品名称 自吸水冰袋
Sample Name Water-absorbing ice pack
样品接收日期 2019.10.25
Sample Received Date Oct. 25, 2019
样品检测日期 2019.10.25-2019.10.29
Testing Period Oct. 25, 2019 to Oct. 29, 2019

检测要求 根据客户要求, 对所提交样品中的铅(Pb), 镉(Cd), 汞(Hg), 六价铬(Cr(VI)), 多溴联苯(PBBs), 多溴二苯醚(PBDEs)进行测试。
Test Requested As specified by client, to test Lead(Pb), Cadmium(Cd), Mercury(Hg), Hexavalent Chromium(Cr(VI)), Polybrominated Biphenyls(PBBs), Polybrominated Diphenyl Ethers (PBDEs) in the submitted sample(s).

检测依据/检测结果 请参见下页。
Test Method/Test Result(s) Please refer to the following page(s).

主 检

李丽娟
郑晴涛

郑晴涛

技术经理 Technical Manager

审 核

文利

Reviewed by

日 期

2019.10.29

Date

No. R338856670

广东省深圳市宝安区新安街道兴东社区华测检测大楼



华测检测集团股份有限公司
Centre Testing International Group Co., Ltd.
CTI Building, Xing Dong Community, Xin'an Sub-district, Bao'an District, Shenzhen City, Guangdong Province, P.R. China

检测报告

Test Report

报告编号 A2190281167101001E

第 2 页 共 7 页

Report No. A2190281167101001E

Page 2 of 7

检测依据 Test Method

测试项目 Test Item(s)	测试方法 Test Method	测试仪器 Measured Equipment(s)
铅 Lead(Pb)	IEC 62321-5:2013	ICP-OES
镉 Cadmium(Cd)	IEC 62321-5:2013	ICP-OES
汞 Mercury(Hg)	IEC 62321-4:2013+AMD1:2017 CSV	ICP-OES
六价铬 Hexavalent Chromium(Cr(VI))	IEC 62321-7-2:2017和/或IEC 62321-5:2013测试总铬含量 IEC 62321-7-2:2017 and/or determination of Total Chromium by IEC 62321-5:2013	UV-Vis/ICP-OES
多溴联苯 Polybrominated Biphenyls(PBBs)	IEC 62321-6:2015	GC-MS
多溴二苯醚 Polybrominated Diphenyl Ethers (PBDEs)	IEC 62321-6:2015	GC-MS

检测报告

Test Report

报告编号 A2190281167101001E

第 3 页 共 7 页

Report No. A2190281167101001E

Page 3 of 7

检测结果 Test Result(s)

测试项目 Tested Item(s)	结果 Result	方法检出限 MDL
铅 Lead(Pb)	N.D.	2 mg/kg
镉 Cadmium(Cd)	N.D.	2 mg/kg
汞 Mercury(Hg)	N.D.	2 mg/kg
六价铬 Hexavalent Chromium(Cr(VI))	N.D.	8 mg/kg

测试项目 Tested Item(s)	结果 Result	方法检出限 MDL
多溴联苯 Polybrominated Biphenyls(PBBs)		
一溴联苯 Monobromobiphenyl	N.D.	5 mg/kg
二溴联苯 Dibromobiphenyl	N.D.	5 mg/kg
三溴联苯 Tribromobiphenyl	N.D.	5 mg/kg
四溴联苯 Tetrabromobiphenyl	N.D.	5 mg/kg
五溴联苯 Pentabromobiphenyl	N.D.	5 mg/kg
六溴联苯 Hexabromobiphenyl	N.D.	5 mg/kg
七溴联苯 Heptabromobiphenyl	N.D.	5 mg/kg
八溴联苯 Octabromobiphenyl	N.D.	5 mg/kg
九溴联苯 Nonabromobiphenyl	N.D.	5 mg/kg
十溴联苯 Decabromobiphenyl	N.D.	5 mg/kg

测试项目 Tested Item(s)	结果 Result	方法检出限 MDL
多溴二苯醚 Polybrominated Diphenyl Ethers (PBDEs)		
一溴二苯醚 Monobromodiphenyl ether	N.D.	5 mg/kg
二溴二苯醚 Dibromodiphenyl ether	N.D.	5 mg/kg
三溴二苯醚 Tribromodiphenyl ether	N.D.	5 mg/kg
四溴二苯醚 Tetrabromodiphenyl ether	N.D.	5 mg/kg
五溴二苯醚 Pentabromodiphenyl ether	N.D.	5 mg/kg
六溴二苯醚 Hexabromodiphenyl ether	N.D.	5 mg/kg
七溴二苯醚 Heptabromodiphenyl ether	N.D.	5 mg/kg
八溴二苯醚 Octabromodiphenyl ether	N.D.	5 mg/kg
九溴二苯醚 Nonabromodiphenyl ether	N.D.	5 mg/kg
十溴二苯醚 Decabromodiphenyl ether	N.D.	5 mg/kg

检测报告

Test Report

报告编号 A2190281167101001E

第 4 页 共 7 页

Report No. A2190281167101001E

Page 4 of 7

样品/部位描述 混测，带有蓝色印字的白色薄膜、白色不织布和白色粉末
Sample/Part Description Mixed test, white film with blue printing, white non-woven fabric and white powder

备注：
-对于检测铅，镉，汞之样品已完全溶解。
-根据客户要求，对样品进行混合测试，测试结果不代表混合测试样品中任何一种单一材质的含量。
-N.D. = 未检出（小于方法检出限）
-mg/kg = ppm = 百万分之一

Remark:
-The sample(s) had been dissolved totally tested for Lead, Cadmium, Mercury.
-As specified by client, the test was conducted by mixing several samples together.
The result(s) shown on this report may be different from the content of any homogeneous material.
-MDL = Method Detection Limit
-N.D. = Not Detected (<MDL)
-mg/kg = ppm = parts per million

注释： 本报告中的数据结果供科研、教学、企业内部质量控制、企业产品研发等目的用。

Note: The testing data and result(s) in this report is(are) just for scientific research, education, internal quality control and product development etc.

检测报告 Test Report

报告编号 A2190281167101001E

第 5 页 共 7 页

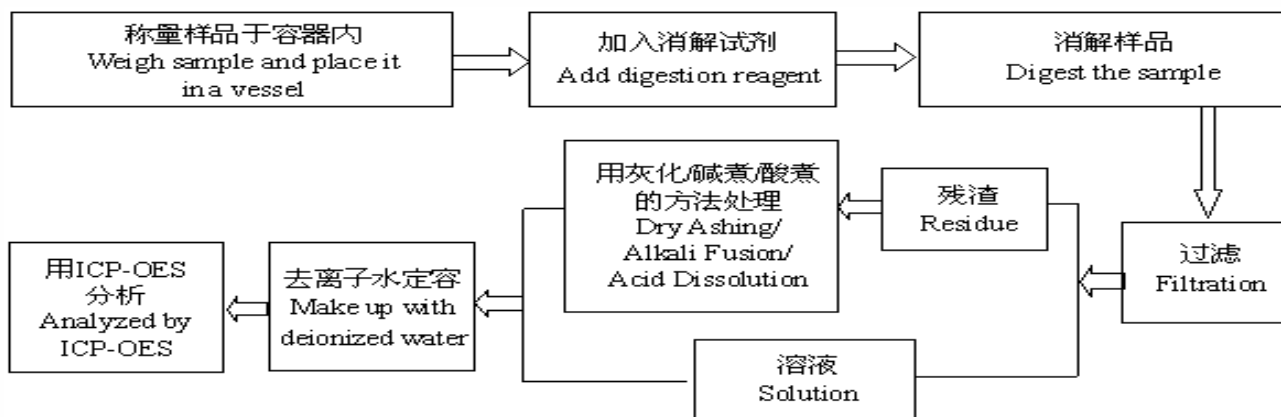
Report No. A2190281167101001E

Page 5 of 7

检测流程 Test Process

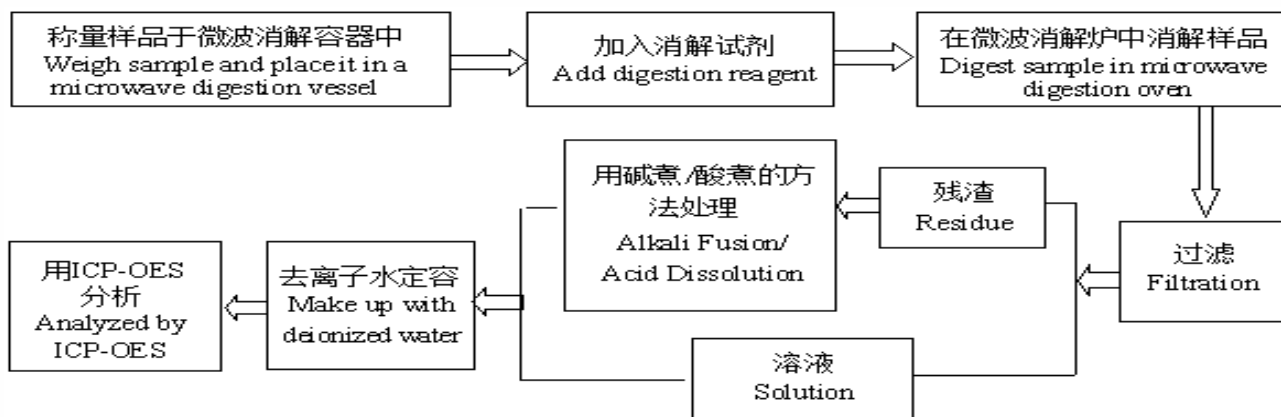
1. 铅(Pb), 镉(Cd), 铬(Cr)

Lead(Pb), Cadmium(Cd), Chromium(Cr)



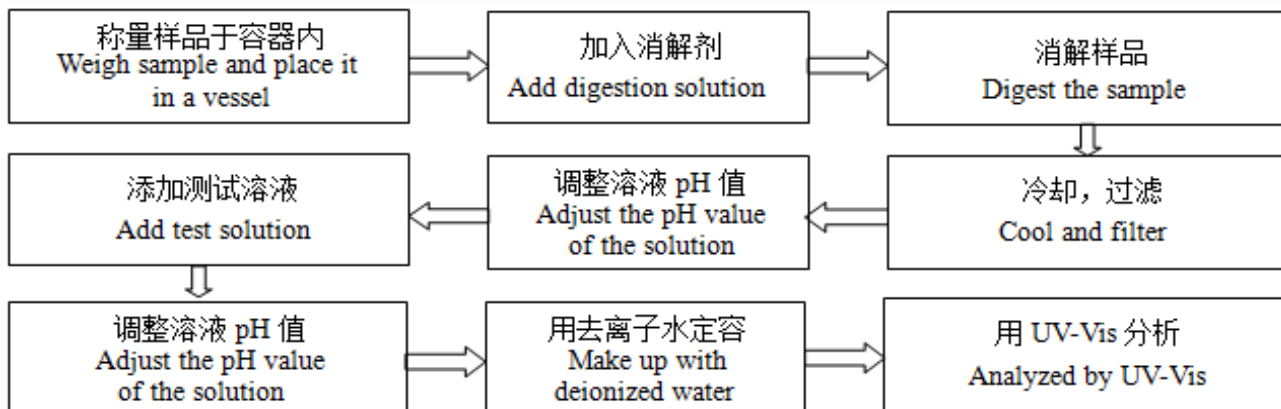
2. 汞(Hg)

Mercury(Hg)



3. 六价铬(Cr(VI))

Hexavalent Chromium(Cr(VI))



检测报告 Test Report

报告编号 A2190281167101001E

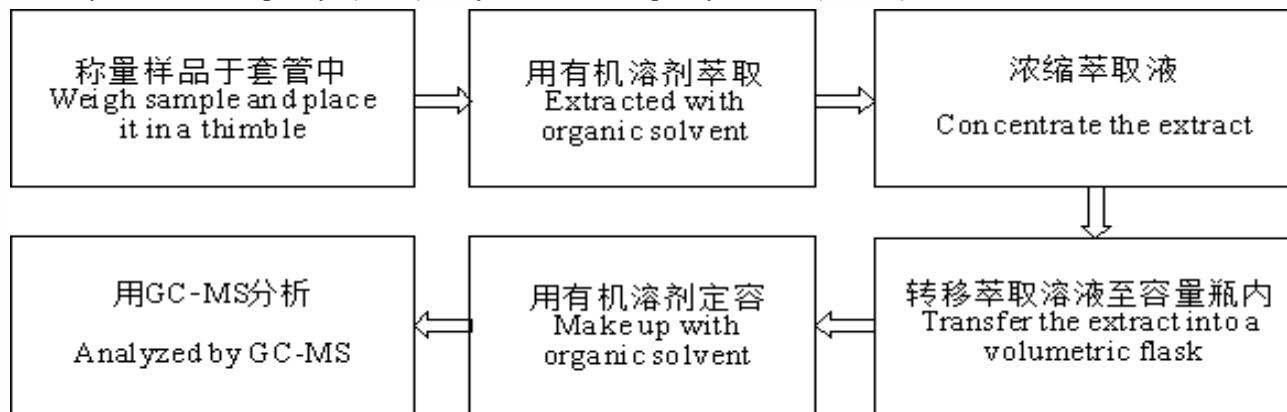
第 6 页 共 7 页

Report No. A2190281167101001E

Page 6 of 7

4. 多溴联苯 (PBBs), 多溴二苯醚 (PBDEs)

Polybrominated Biphenyls(PBBs), Polybrominated Diphenyl Ethers (PBDEs)

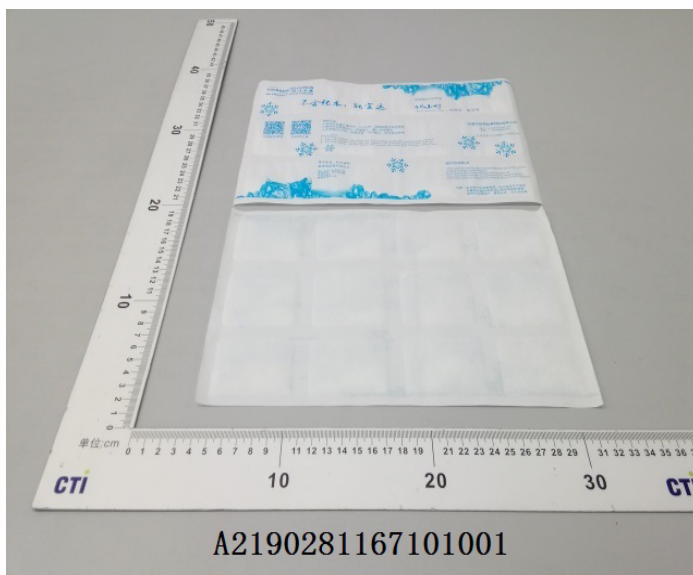


检测报告 Test Report

报告编号 A2190281167101001E
Report No. A2190281167101001E

第 7 页 共 7 页
Page 7 of 7

样品图片 Photo(s) of the sample(s)



报告结束

*** End of report ***

声明Statement:

1. 检测报告无批准人签字、“专用章”及报告骑缝章无效;
This report is considered invalid without approved signature, special seal and the seal on the perforation;
2. 样品及样品信息由申请者提供, 申请者应对其真实性负责, CTI未核实其真实性;
The sample(s) and sample information was/were provided by the client who should be responsible for the authenticity which CTI hasn't verified;
3. 本报告检测结果仅对受测样品负责;
The result(s) shown in this report refer(s) only to the sample(s) tested;
4. 未经CTI书面同意, 不得部分复制本报告;
Without written approval of CTI, this report can't be reproduced except in full;
5. 如检测报告中的英文内容与中文内容有差异, 以中文为准。
In case of any discrepancy between the English version and Chinese version of the testing reports (if generated), the Chinese version shall prevail.